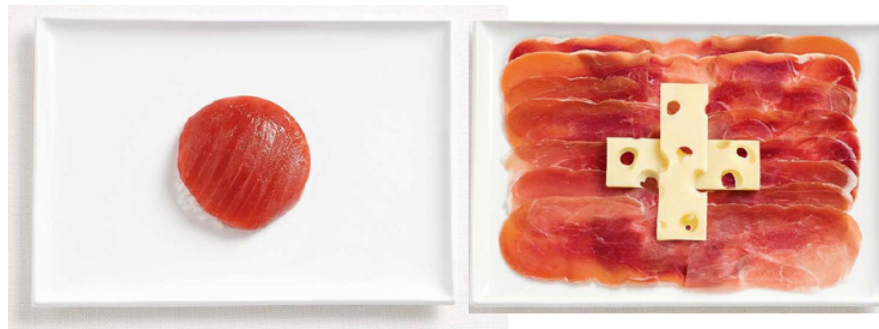




The 10th Annual EU Workshop at the University of Zurich



An International Workshop between the Sub-Major Curriculum EU-Japanology at the
Kansai University Graduate School of Letters
and the Section for East Asian Art History at the University of Zurich

Saturday, November 3, 2018
Section for East Asian Art History
Room RAA-G-15, Rämistrasse 59
Zurich, Switzerland

WORKSHOP PROGRAM

Introductory Remarks

10:20-10:30 YAMAMOTO Tokurō 山本登朗 (Professor, Kansai University)

Research Reports, Part I

Chair: HIRAI Shōichi 平井章一 (Professor, Kansai University)

- 10:30-11:00 Konishi Maiho 小西舞歩 (Kansai University)
「シャガールの《青い恋人たち》（1948－1953）における青の正体」
“True Characteristics of Chagall’s Blue in His *Blue Lovers* (1948-53)”
(in Japanese)
- 11:05-11:35 Xenia PIËCH (University of Zurich)
「中国の20世紀前半における女性と写真」
“Women and Photography in China’s Early Twentieth Century” (in English)
- 11:40-12:10 MATSUZAKI Akito 松崎章人 (Kansai University)
「共有される物語性—ウォルター・シッカート作《Ennui》を例に一」
“The Shared Narrativity of Walter Richard Sickert: His *Ennui* as an Example”
(in English)



- 12:15-12:45 Anjuli RAMDENE (University of Zurich)
「木版絵葉書のアルバムをめぐって」
"A Closer Look at an Album of Woodblock Print Postcard" (In English)

12:45-14:15 LUNCH

Research Reports, Part II

Chair: Hans Bjarne THOMSEN (Professor, University of Zurich)

- 14:15-14:45 Maria STEPANOVA (University of Zurich)
「スタジオ・ジブリ製アニメにおいての宗教と民藝」
"Religious and Folk Art in Studio Ghibli Animation" (in English)
- 14:50-15:20 TANABE Sachi 田邊咲智 (Kansai University)
「菱田春草の欧米遊学をめぐって」
"Regarding Hishida Shunsō's Travels to the West" (in Japanese)
- 15:25-15:55 Tessa MEIER (University of Zurich)
「バーゼル民族博物館蔵の琉装をめぐって」
"Research on a Ryūkyūan Ryūsō in the Collection of the Museum der Kulturen" (In English)
- 16:00-16:30 Catherine LIU (University of Zurich)
「日本文化におけるの萬福寺」
"The Manpukuji Temple in Japanese Culture" (in English)

16:30-17:00 Final Discussions

17:00-17:10 Closing Remarks

17:10 ~ Apéro Reception (RAA-E-30, Rämistrasse 59)

The event is free and open to the public.
As space is limited, prior registration is required.
Please email alina.martimyanova@khist.uzh.ch to make a reservation.

Presentations will be in both Japanese and English.
For questions, please contact the Section for East Asian Art History.

Supported by the EU Center at the Graduate School of Letters, Kansai University, the University of Zurich Foundation, and the Section for East Asian Art, University of Zurich,