



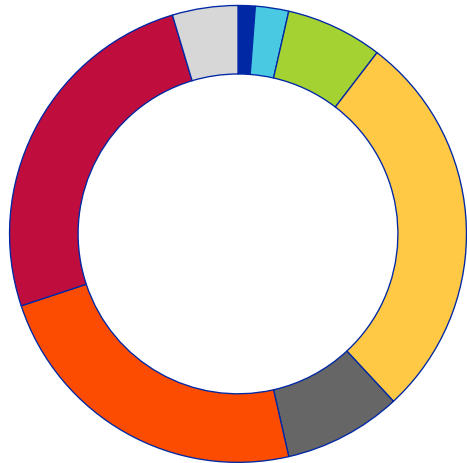
Promotion of Early Career Researchers at UZH

Dr. Claudine Leysinger
18. Oktober 2023

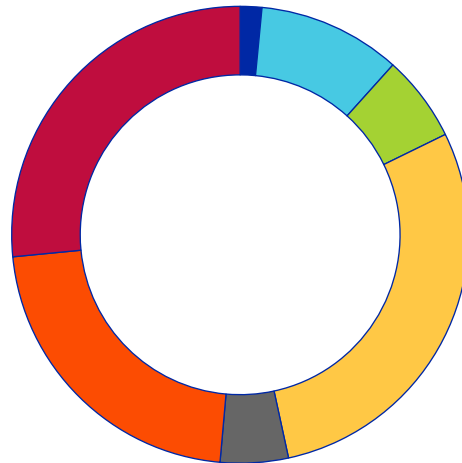
Focus on
Postdocs

GRC

PhDs and Postdocs at UZH (2022)



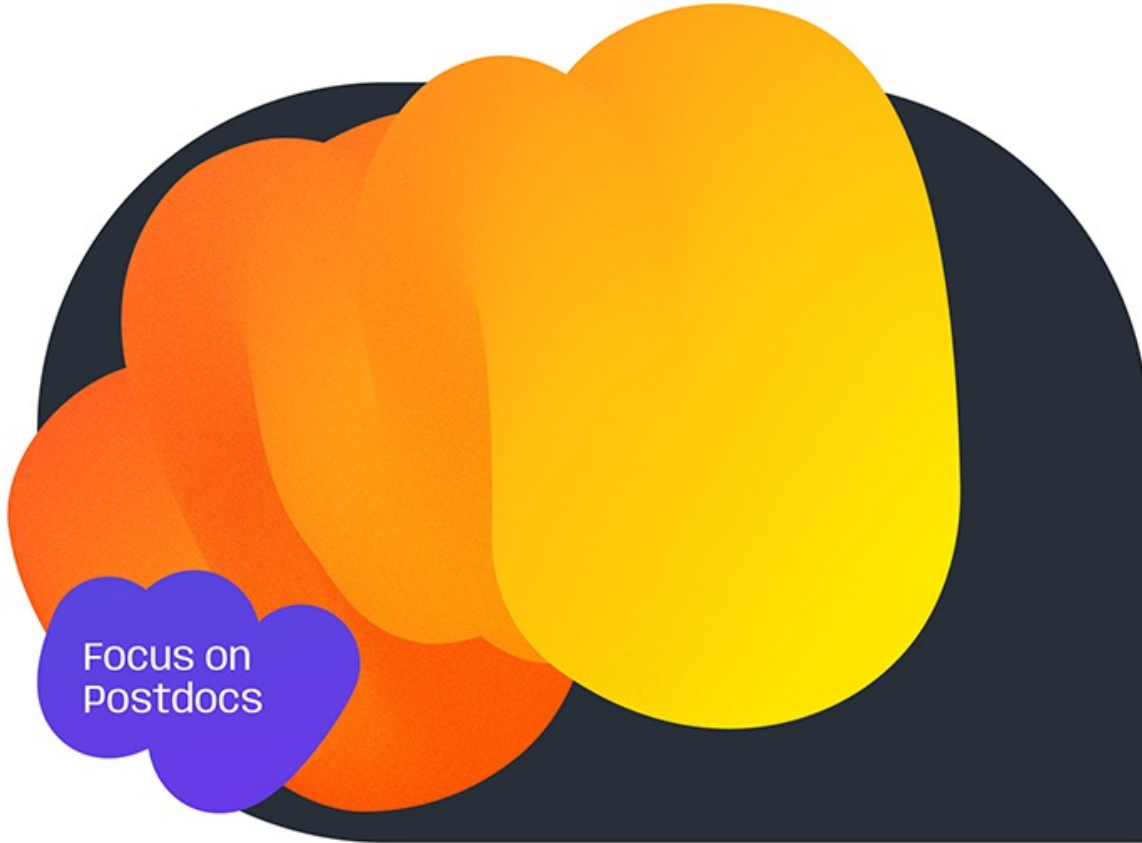
Postdocs: 1 402



PhDs: 5 618

Faculty	% ECRs	Postdocs	PhDs
ThF Faculty of Theology	1,5 %	17	86
RWF Faculty of Law	8,6 %	33	569
WWF Faculty of Business, Econ. & Informatics	6,2 %	96	343
MeF Faculty of Medicine	28,6 %	388	1 620
VSF Faculty of Veterinarian Med.	5,5 %	117	270
PhF Faculty of Arts and Social Sciences	22,3 %	329	1 239
MNF Faculty of Science	26,3 %	357	1 491
Div. Strategic Programs	5 %	65	-

Graduate Campus at a glance

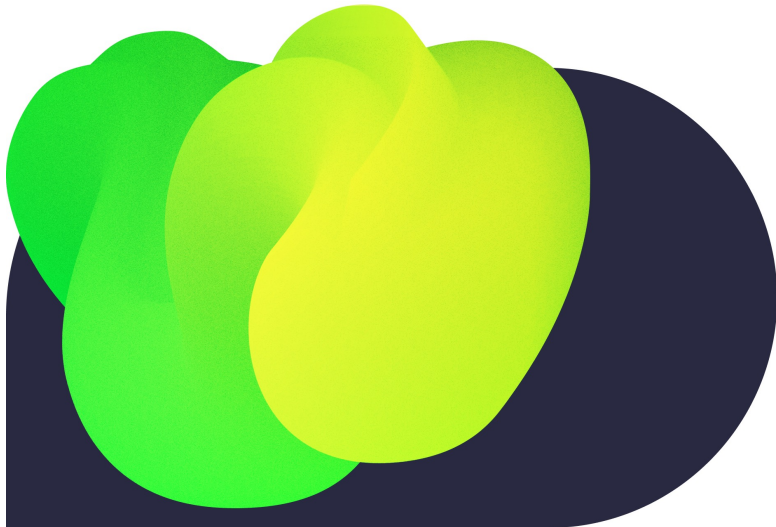


Cross-faculty offerings to support early career researchers, with a focus on postdocs:

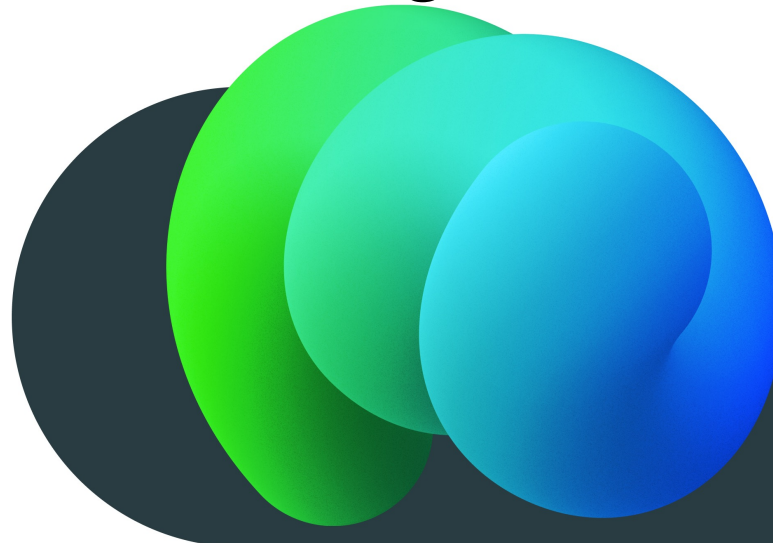
- Awarding **grants**, honoring special achievements, and offering a wide range of courses in **transferable skills**
- Individual **counseling**, coaching and networking programs to promote career development
- **Orientation** through tailored information transfer in events and via digital communication channels

Graduate Campus offerings

Skills



Counseling

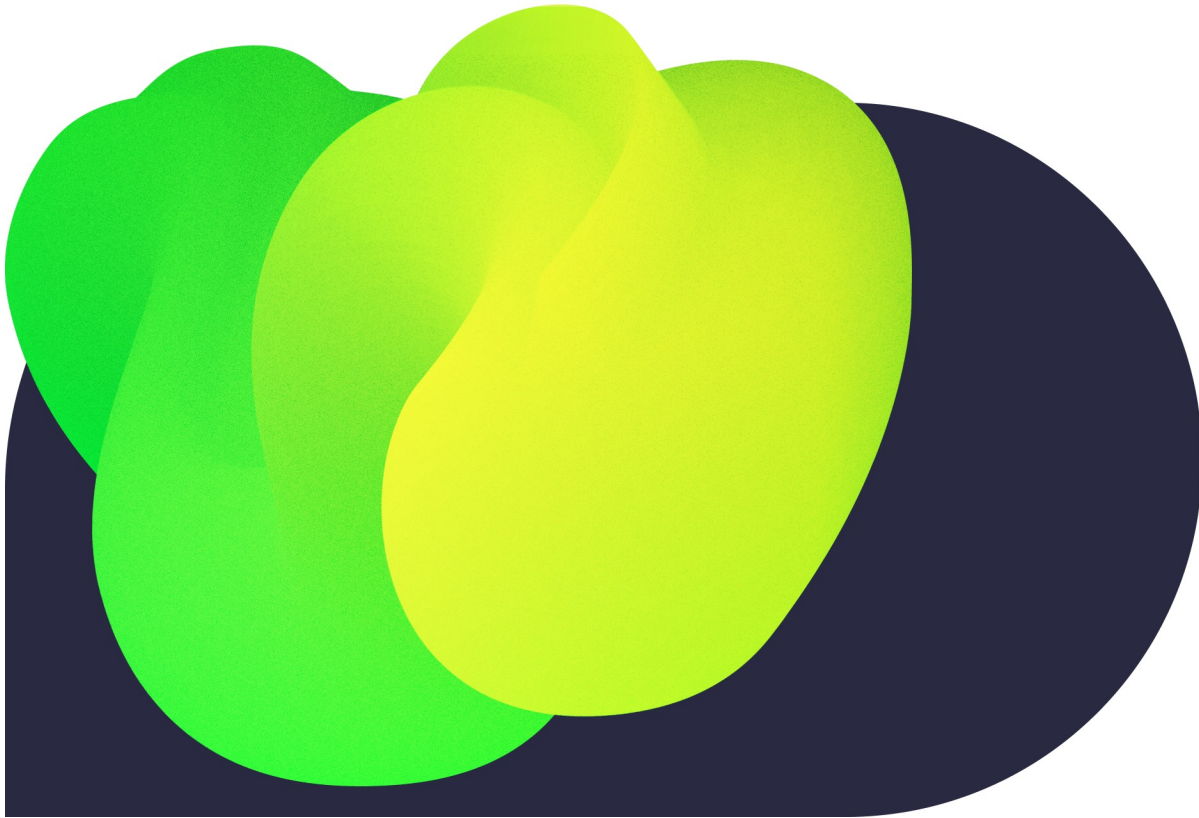


Funding



grc.uzh.ch

Transferable Skills

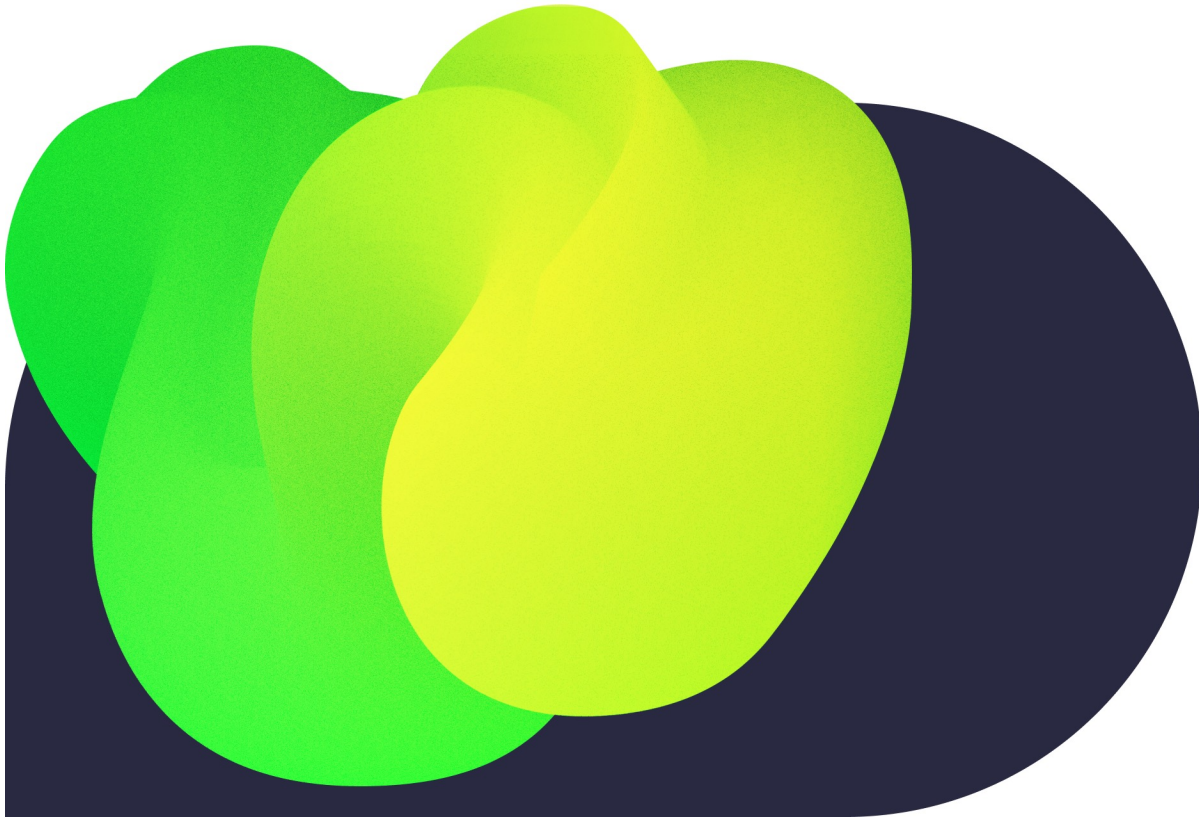


Courses in transferable Skills for PhDs and Postdocs

Focus on Postdocs

Summer Schools:
Citizen Science / Open Science

Transferable Skills



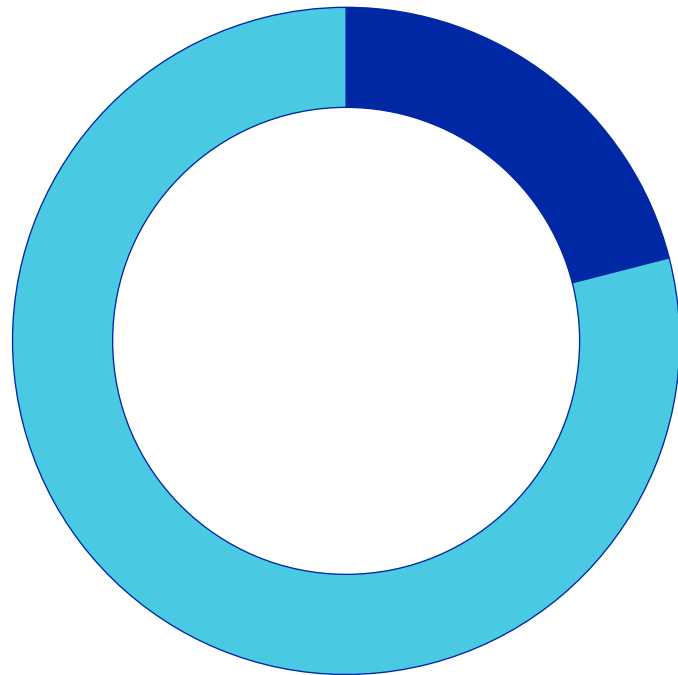
Focus:

- Career & self-management
- Leadership & collaboration
- Academic skills & storytelling
- Writing support
- Mindfulness

New course offerings every semester

[Course offer in the UZH Course Catalogue \(see „further offers“\)](#)

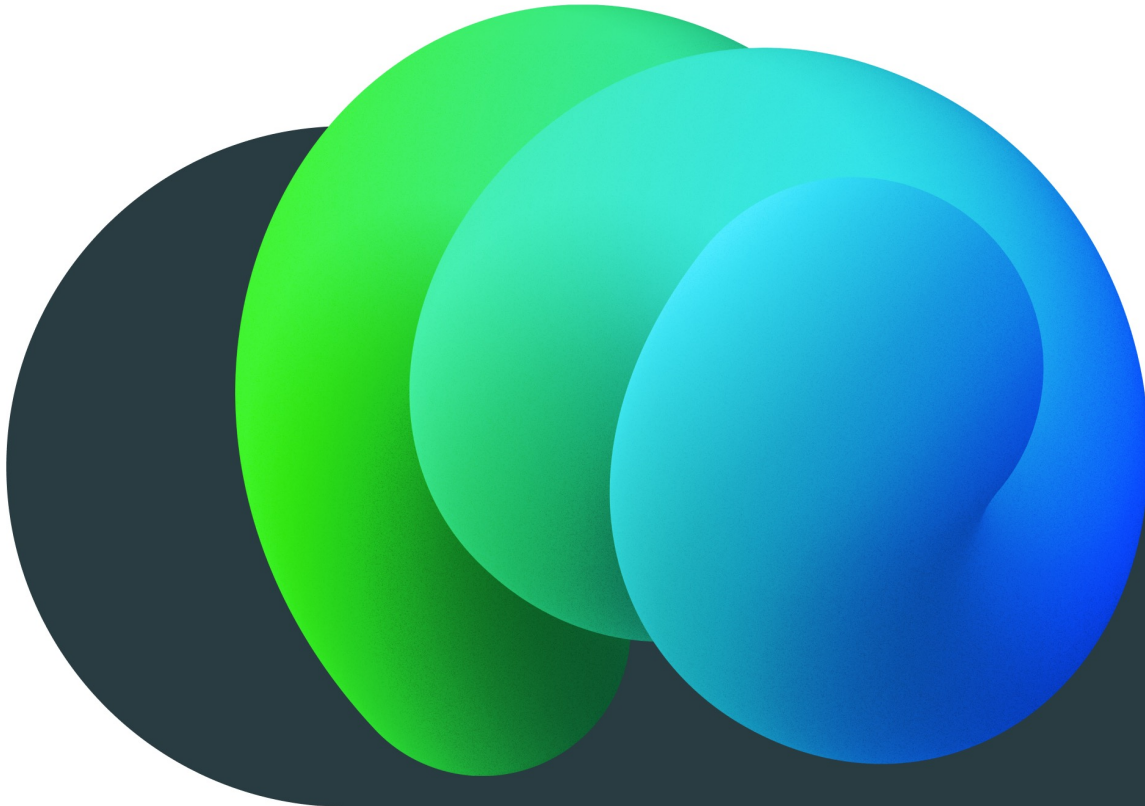
Participants according to Faculty (2022)



■ **Postdocs 21 %**
 ■ **PhDs 79 %**

Faculty	Postdocs	PhDs
ThF Faculty of Theology	2,3 %	3,4 %
RWF Faculty of Law	3,8 %	3,6 %
WWF Faculty of Business, Econ. & Law	3 %	6,7 %
MeF Faculty of Medicine	20,5 %	8,4 %
VSF Faculty of Veterinarian Medicine	2,3 %	2,5 %
PhF Faculty of Arts & Social Sciences	31,7 %	32,7 %
MNF Faculty of Science	36,4 %	42,7 %

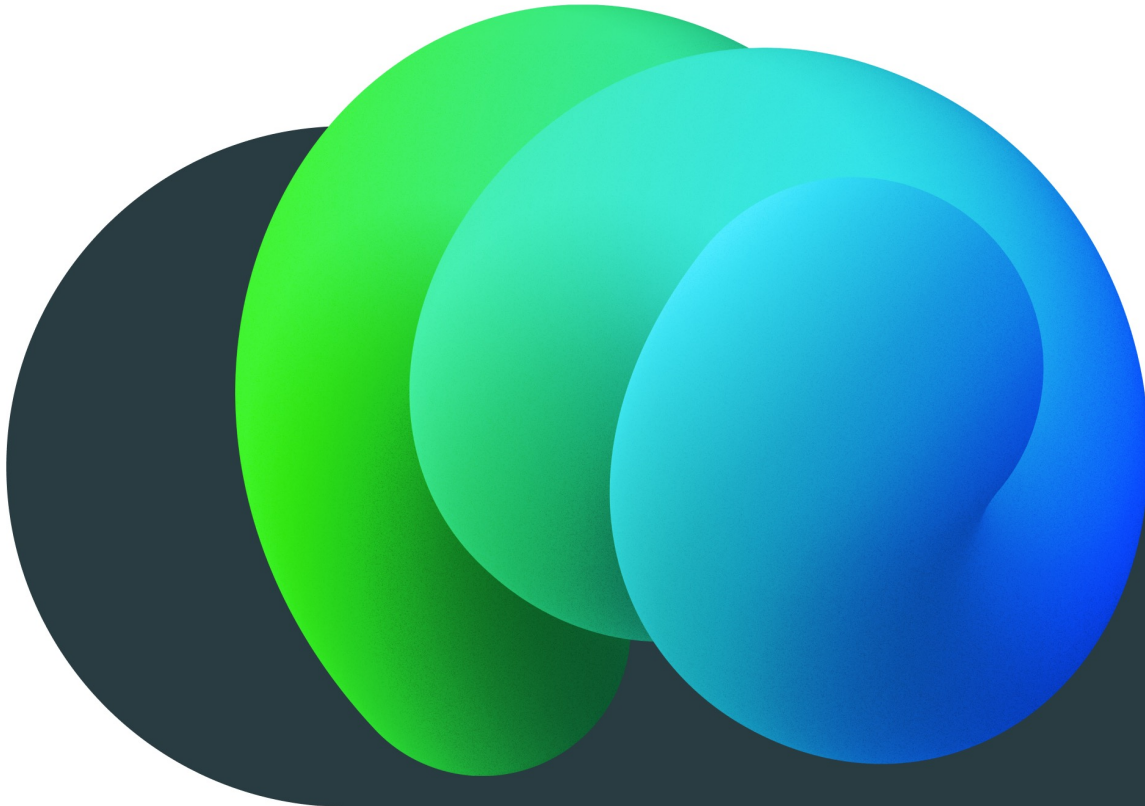
Counseling



Individual counseling and coaching
for issues related to the qualification
phase

Events for tailored information
transfer and networking programs

Counseling



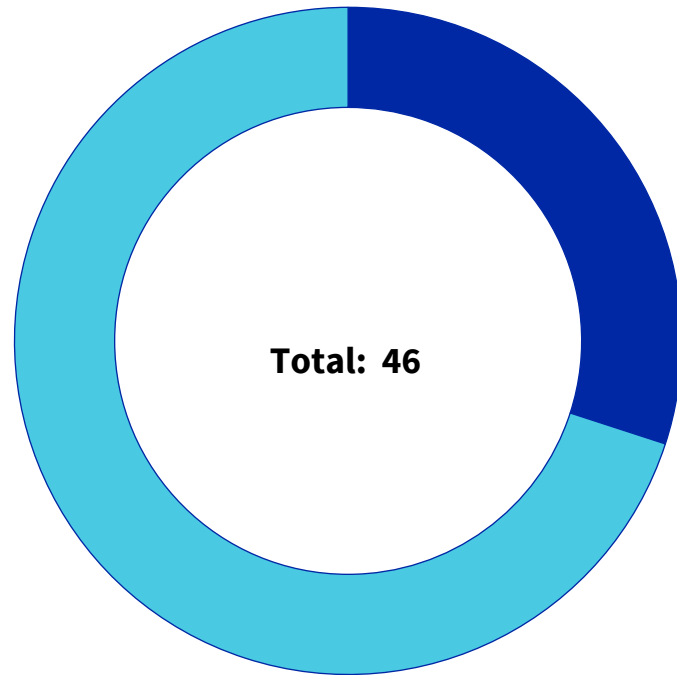
Event series:

- Onboarding Postdocs
- Postdoc Meet Up
- Postdoc Jobworld
- Mittelbaufest



Ads via X, LinkedIn,
Newsletter

Coachees according to Faculty (2022)

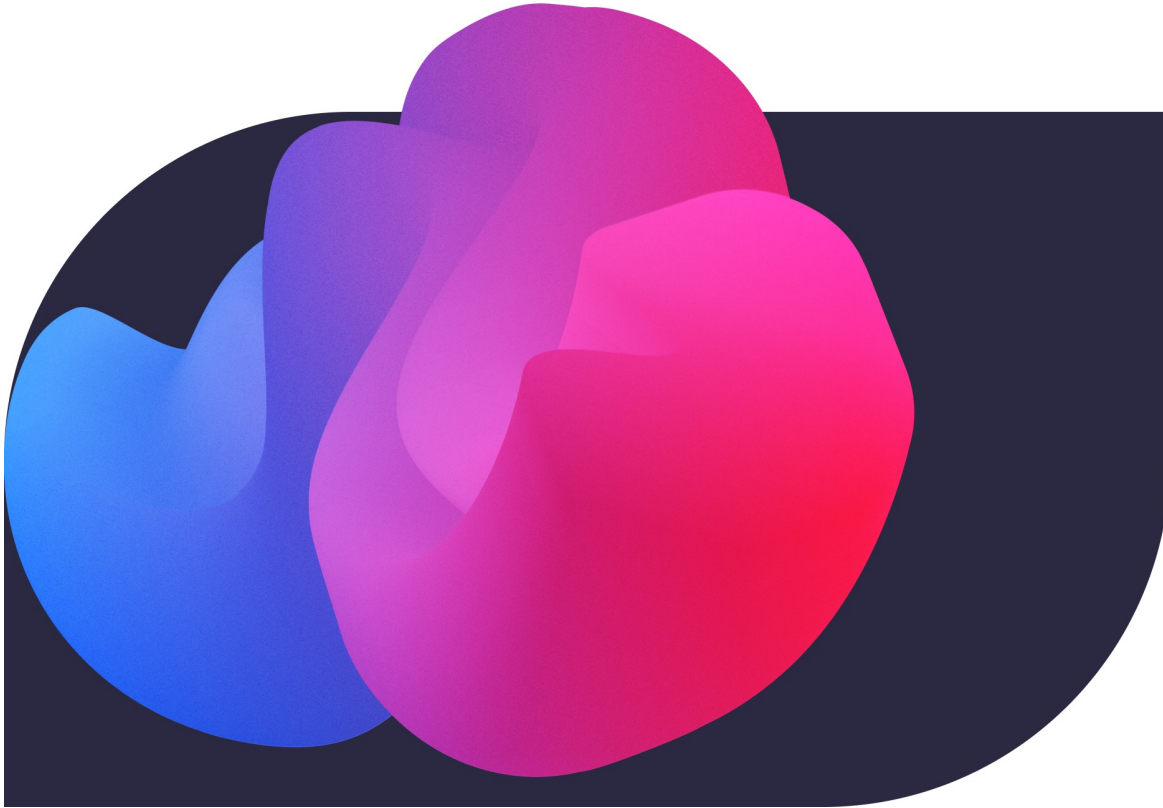


■ Postdocs 27 %
■ PhDs 63 %

Faculty

ThF	Faculty of Theology	7 %
RWF	Faculty of Law	4 %
WWF	Faculty of Business, Econ. & Law	7 %
MeF	Faculty of Medicine	13 %
VSF	Faculty of Veterinarian Medicine	—
PhF	Faculty of Arts & Social Sciences	52 %
MNF	Faculty of Science	17 %

Funding



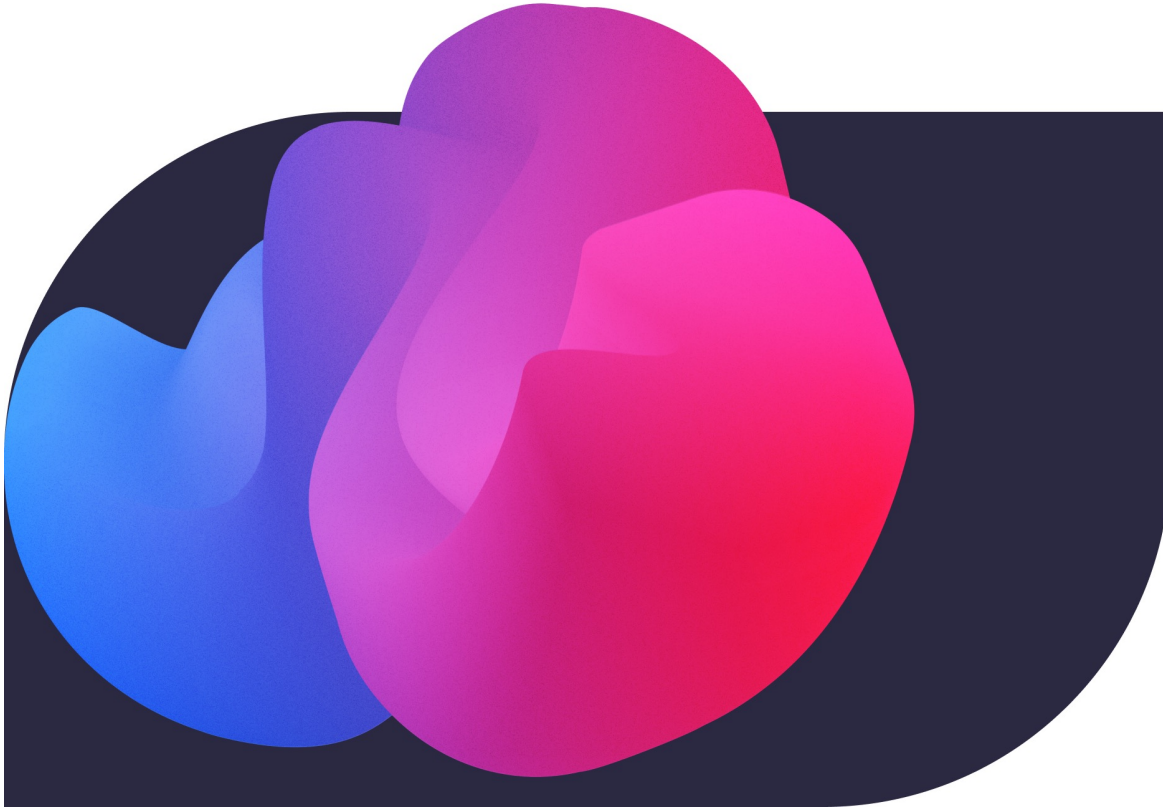
GRC Career Grant,
Short Grant, Travel Grant,
VAUZ Meeting Fund

Focus on
Postdocs

Mentoring Awards, FAN Awards, 3MT

International networking:
ESOF, U21, LERU, GSPI (Geneva Science-
Policy Interface)

Funding



Support of individual projects:

GRC Career Grants

CHF 5'000 – 15'000 | twice per year

GRC Short Grants

CHF 1'000 – 5'000 | continuously

Support of stays/travels:

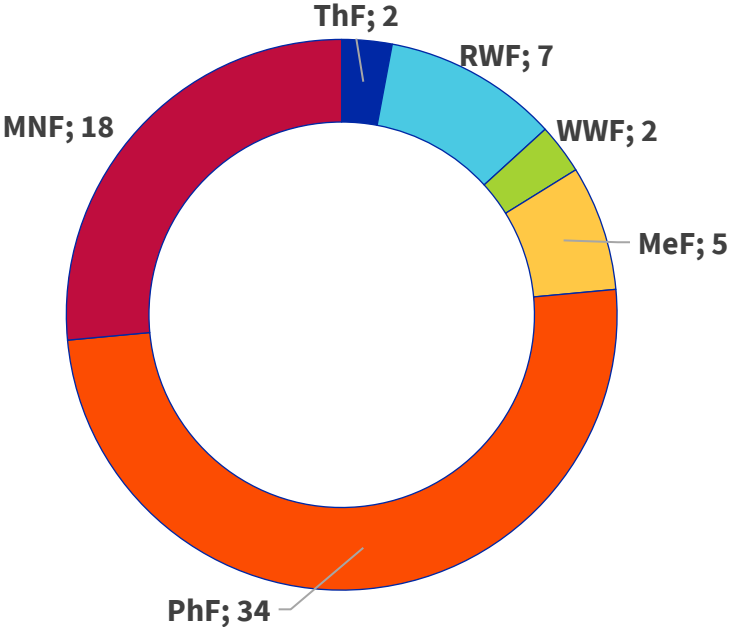
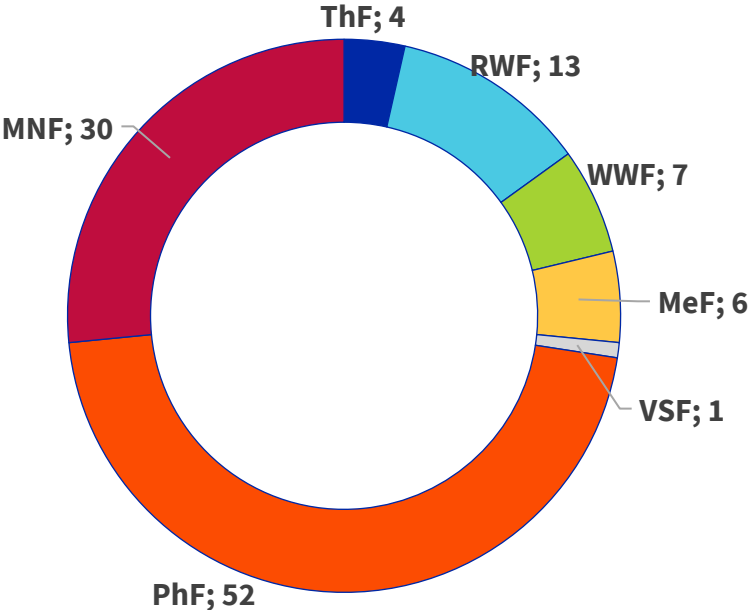
GRC Travel Grants

max. CHF 4'600 | twice per year

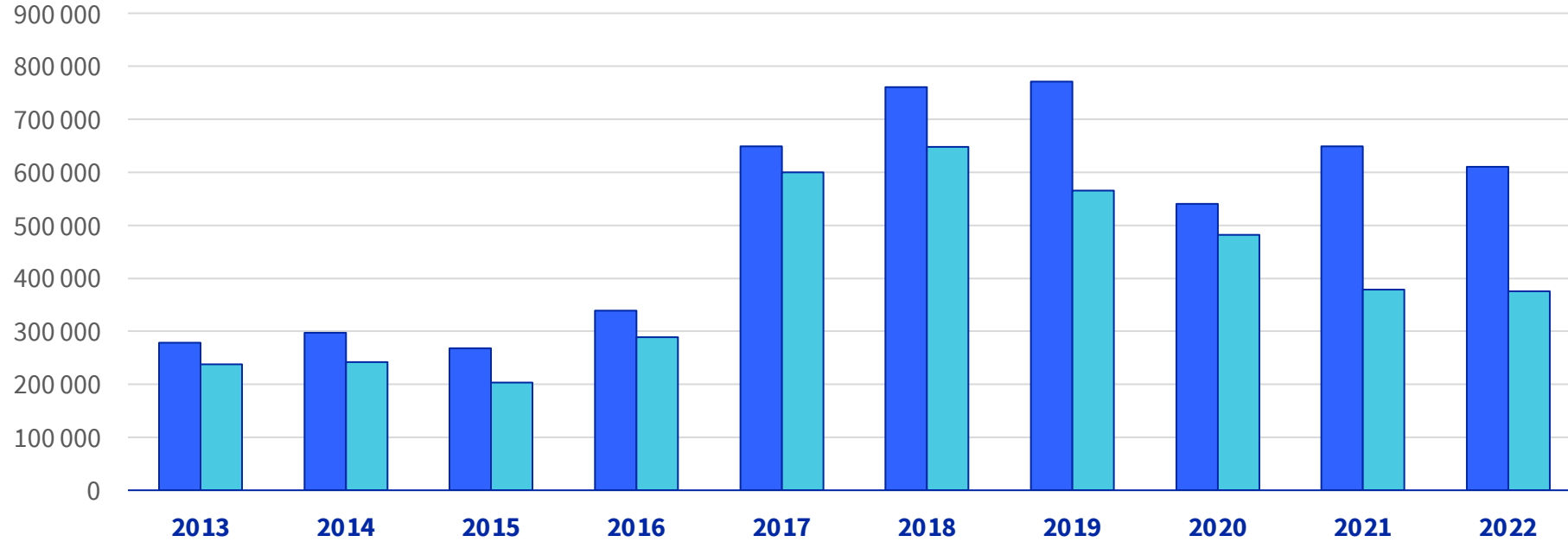
Number of ECRs / Faculty GRC Travel Grants (2022)

GRC Travel Grants applied for: 113

Funded applications : 68
Funding volume of total: CHF 145'271
Success rate: 60.2 %



Development of Applications and Allocation (2022)



Funds applied for
in CHF

278 904 297 091 267 675 339 007 648 790 760 788 770 823 540 805 649 233 610 436

Funds granted
in CHF

237 734 241 901 202 962 288 617 600 416 648 080 565 678 482 347 379 016 375 227



Focus on
Postdocs

GRC